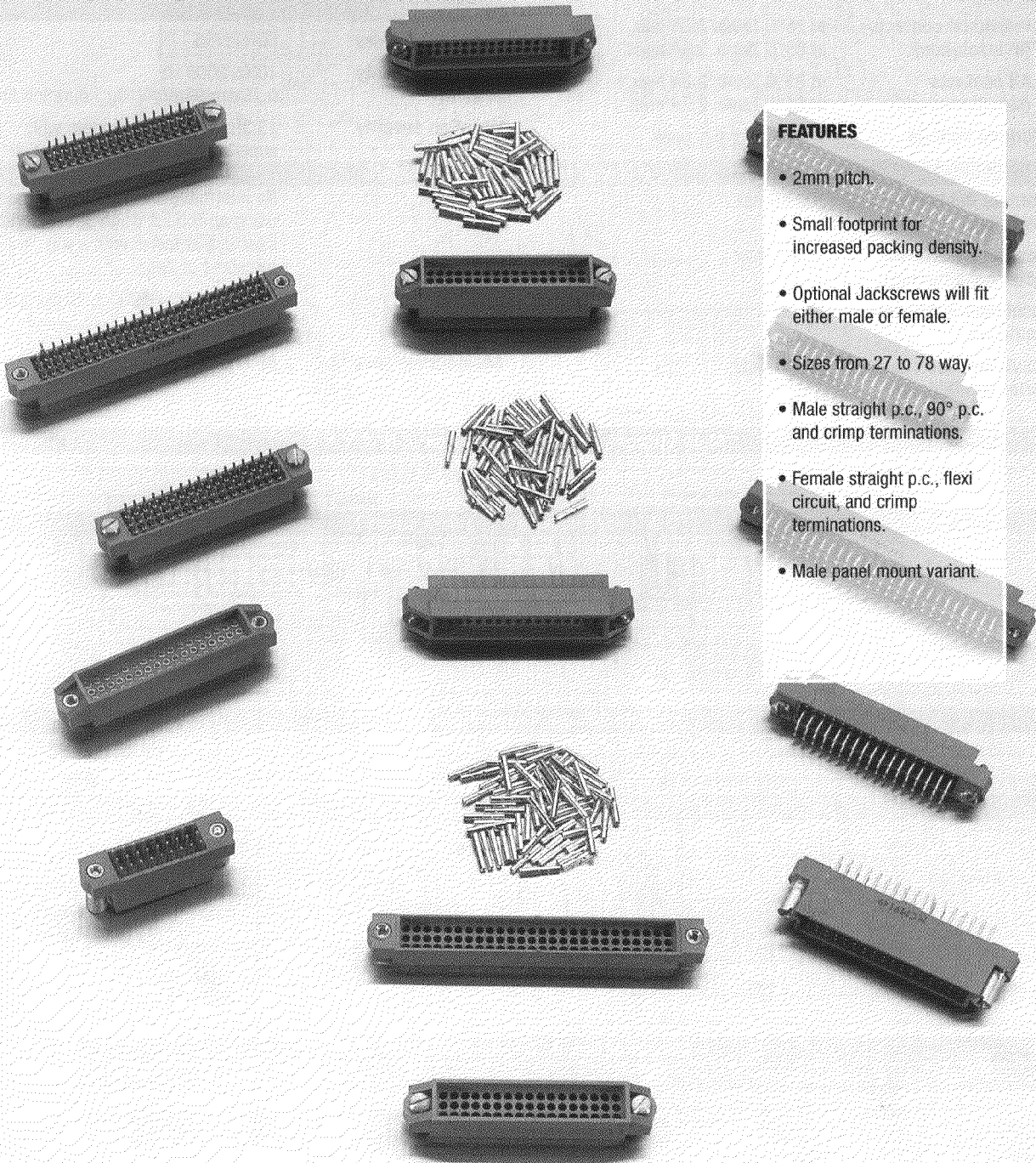
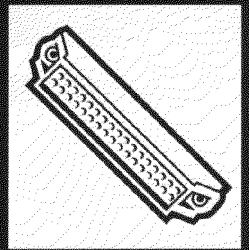


# MICRONECTOR 300

High Density 2 mm Pitch Connectors



## FEATURES

- 2mm pitch.
- Small footprint for increased packing density.
- Optional Jackscrews will fit either male or female.
- Sizes from 27 to 78 way.
- Male straight p.c., 90° p.c. and crimp terminations.
- Female straight p.c., flexi circuit, and crimp terminations.
- Male panel mount variant.



# TECHNICAL DATA

## Materials

<b>Insulator</b>	Glass filled thermoplastic UL94V-0
<b>Contact</b>	Copper alloy plated hard acid gold
<b>Termination</b>	Hard acid gold or tin/lead
<b>Jackscrows</b>	Stainless steel

## Electrical

<b>Current</b>	
<b>Individual contacts (in insulation)</b>	at 25°C Tamb. 3.3A max. at 85°C Tamb. 2.6A max.
<b>All contacts (simultaneously)</b>	at 25°C Tamb. 3.0A max. at 85°C Tamb. 2.2A max.
<b>Working Voltage</b>	120V d.c. or a.c. peak
<b>Proof Voltage</b>	360V d.c. or a.c. peak
<b>Contact Resistance (initially)</b>	10mΩ max.
<b>Contact Resistance (after conditioning)</b>	13mΩ max.
<b>Insulation Resistance (initially)</b>	1000MΩ min.
<b>Insulation Resistance (after conditioning)</b>	100MΩ min.

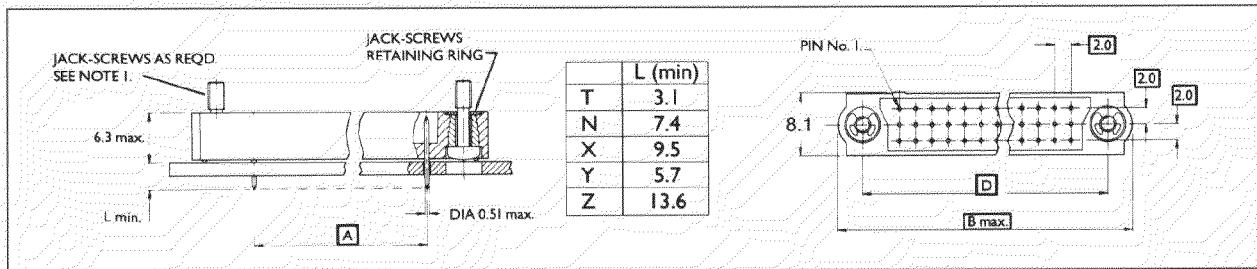
## Mechanical

<b>Mechanical operations</b>	500
<b>Insertion and withdrawal force (per contact pair)</b>	0.8N max., 0.2N min.
<b>Contact retention</b>	10N min.
<b>Crimp barrel accommodation</b>	22 A.W.G. - 28 A.W.G. to BS G 210 Type A

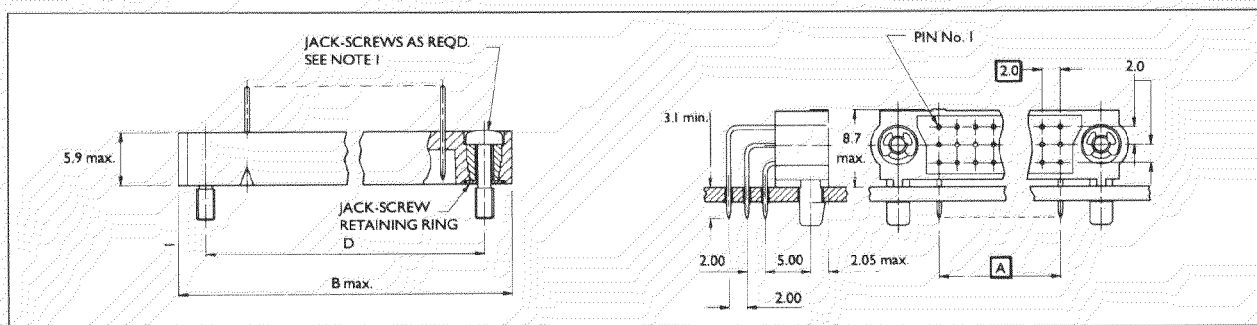
## Environmental

<b>Climatic category</b>	55/125/56
<b>Vibration severity General</b>	10Hz, 2000 Hz 0.75mm/98m/s <sup>2</sup> (10g <sub>n</sub> ) duration 6h
<b>Vibration severity Additional</b>	13.3Hz to 2000Hz random with superimposed sinusoids, duration 15 min each of 4 planes. No intermittancies measured when using an H.S.L.I. (High Speed Logic Interrupt) detector with a trip threshold of 2ns
<b>Bump severity</b>	390m/s <sup>2</sup> (40g <sub>n</sub> ) 4000 ± 10 bumps
<b>Shock severity</b>	981 m/s <sup>2</sup> (100g <sub>n</sub> ), for 6ms
<b>Acceleration severity</b>	490m/s <sup>2</sup> (50g <sub>n</sub> )

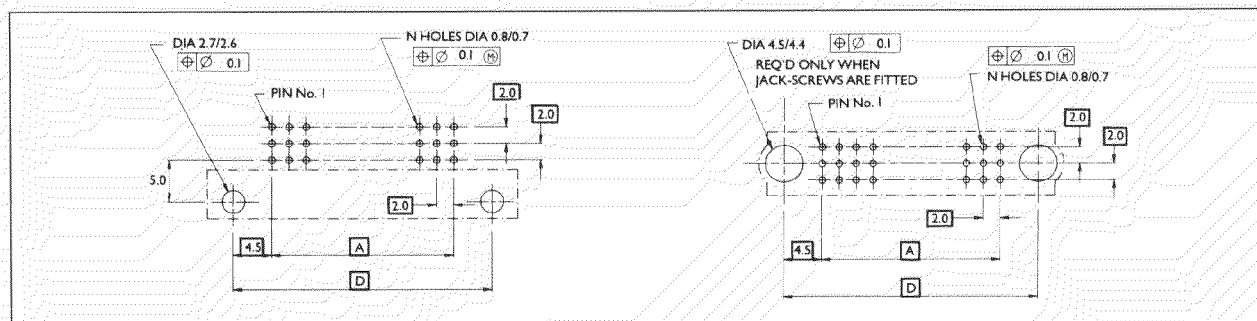
## Male Straight p.c. Termination Type T, N, X, Y & Z



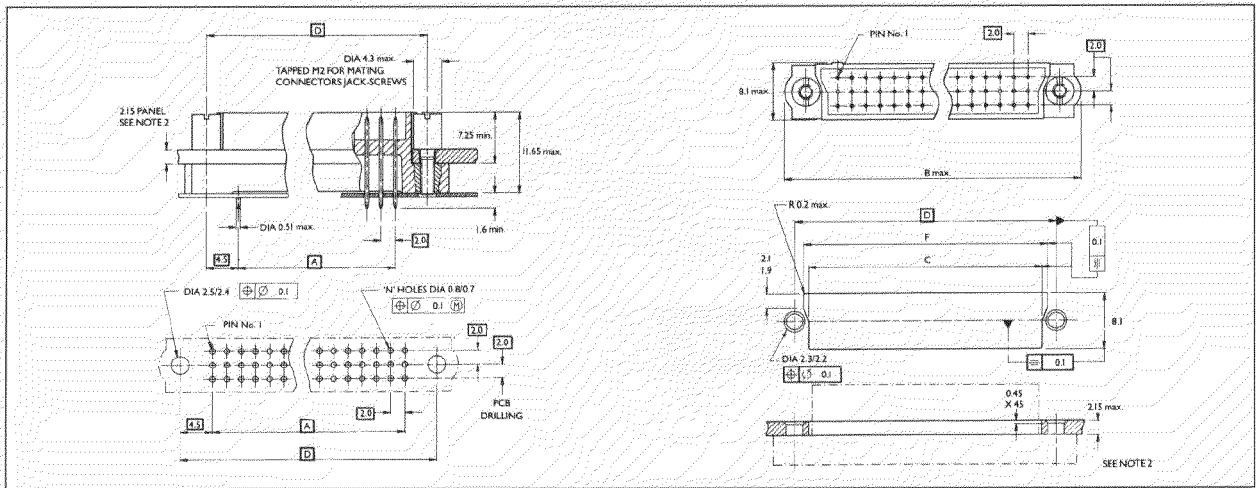
## Male 90° p.c. Termination Type L



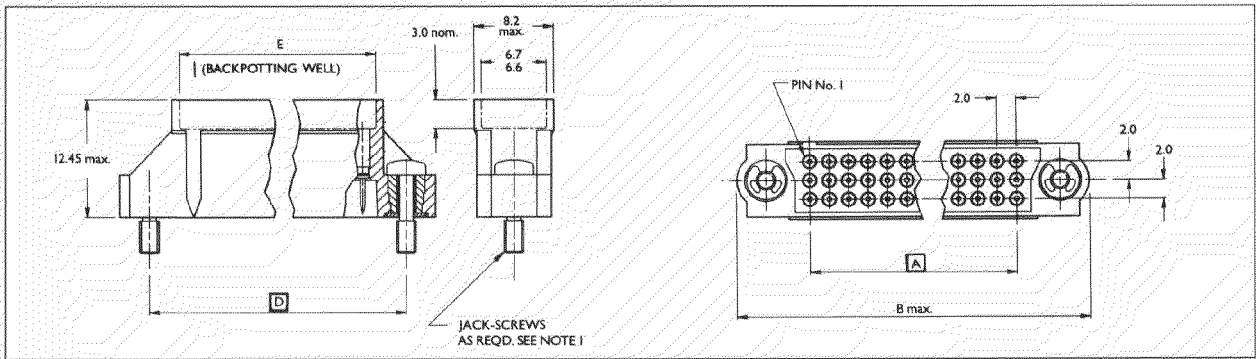
## Mounting Details Termination Type T & L



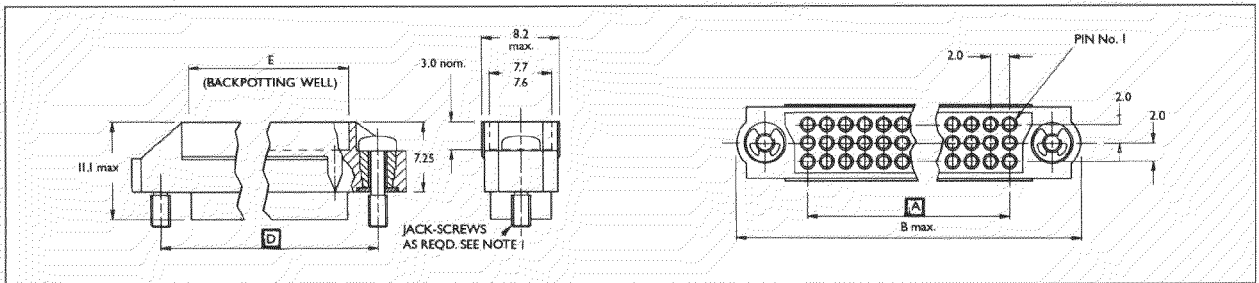
## Male Panel Mounting (2.15 max.) Termination Type N



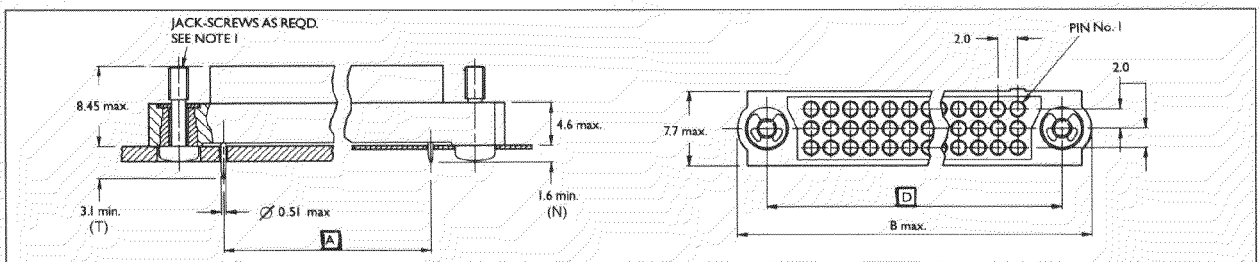
## Male Crimp Termination Type C & D



## Female Crimp Termination Type C & D



## Female Straight p.c. Termination Type T & N

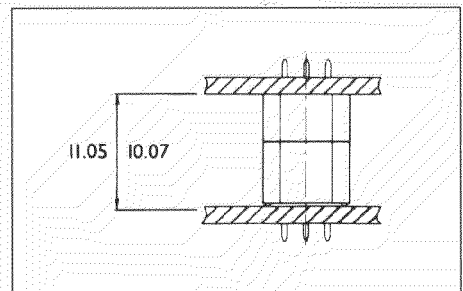


### Common Dimensions

#### Contact Arrangement

Dimensions	27	51	78
A	16	32	50
B max.	31.1	47.1	65.1
C	20.7/20.06	36.7/36.6	54.7/54.6
D	25	41	59
E	19.1/18.9	35.1/34.9	53.1/52.9
F	22.9/22.8	38.9/38.8	56.9/56.8

### Spacing Board - Board



## Crimp Details

Preferred wire type BS G 210 (Type A)

\* Also suitable for use with 24 A.W.G.

DEF-STAN 61-12 (Part 6 Type 1) PVC

NOTE: Whilst a crimp contact withdrawal tool (MP6808) is available as an optional accessory, it is only suitable for removal of ALL contacts when the moulding MUST be replaced prior to reinsertion of the contacts.

Termination type	Crimp barrel accommodation	Wire Size/Crimp Tool Setting			
		22 A.W.G.	24 A.W.G.	26 A.W.G.	28 A.W.G.
C*	24-28 A.W.G.	-	7	6	6
D	22 A.W.G.	6	-	-	-

**Wire preparation**

## ORDERING INFORMATION

**301 M 27 T 03 A 00**

**SERIES** \_\_\_\_\_

**CONTACT TYPE** \_\_\_\_\_

**CONTACT ARRANGEMENT** \_\_\_\_\_

**TERMINATION TYPE** \_\_\_\_\_

**TERMINATION FINISH** \_\_\_\_\_

**MOUNTING** \_\_\_\_\_

**VARIANT** \_\_\_\_\_

### Series

301 - Three row

### Contact Type

M - Male  
F - Female

### Contact Arrangement

27 - 51 - 78

### Termination Type

L - 90° p.c. (male only)  
T - Straight p.c.  
N - Straight p.c. (short for flexi circuits)  
X - Straight p.c. (male only)  
Y - Straight p.c. (male only)  
Z - Straight p.c. (male only)

C - Crimp 24-28 A.W.G.

D - Crimp 22 A.W.G.

### Termination Finish

01 - Gold (standard for crimp)  
03 - Tin alloy (standard for p.c.)

### Mounting

A - p.c.b.  
B - Panel (2.15max.)  
C - Cable

### Variant

00 - Standard  
01 - With Jackscrews (except mounting "B")

Jackscrew Assembly (pair) Part No. **MP 6822**

## Tools

### Order Code

Hand Crimp Tool MP22520/2-01  
8 Indent Die Set (BS Style 5310-3A-300)

Contact Insertion Tool MP 6811  
(BS Style T5748-19)

### Order Code

Contact Withdrawal Tool MP 6808 (female)  
MP 6809 (male)

Crimp Tool Positioner MP 6823

# McMurdo

**Rodney Road, Portsmouth, Hampshire, PO4 8SG, UK. Tel: +44 (0) 1705 735361 Fax: +44 (0) 1705 821777**

As we constantly strive to improve McMurdo products, all specifications are subject to change without notice.

M300/03/97