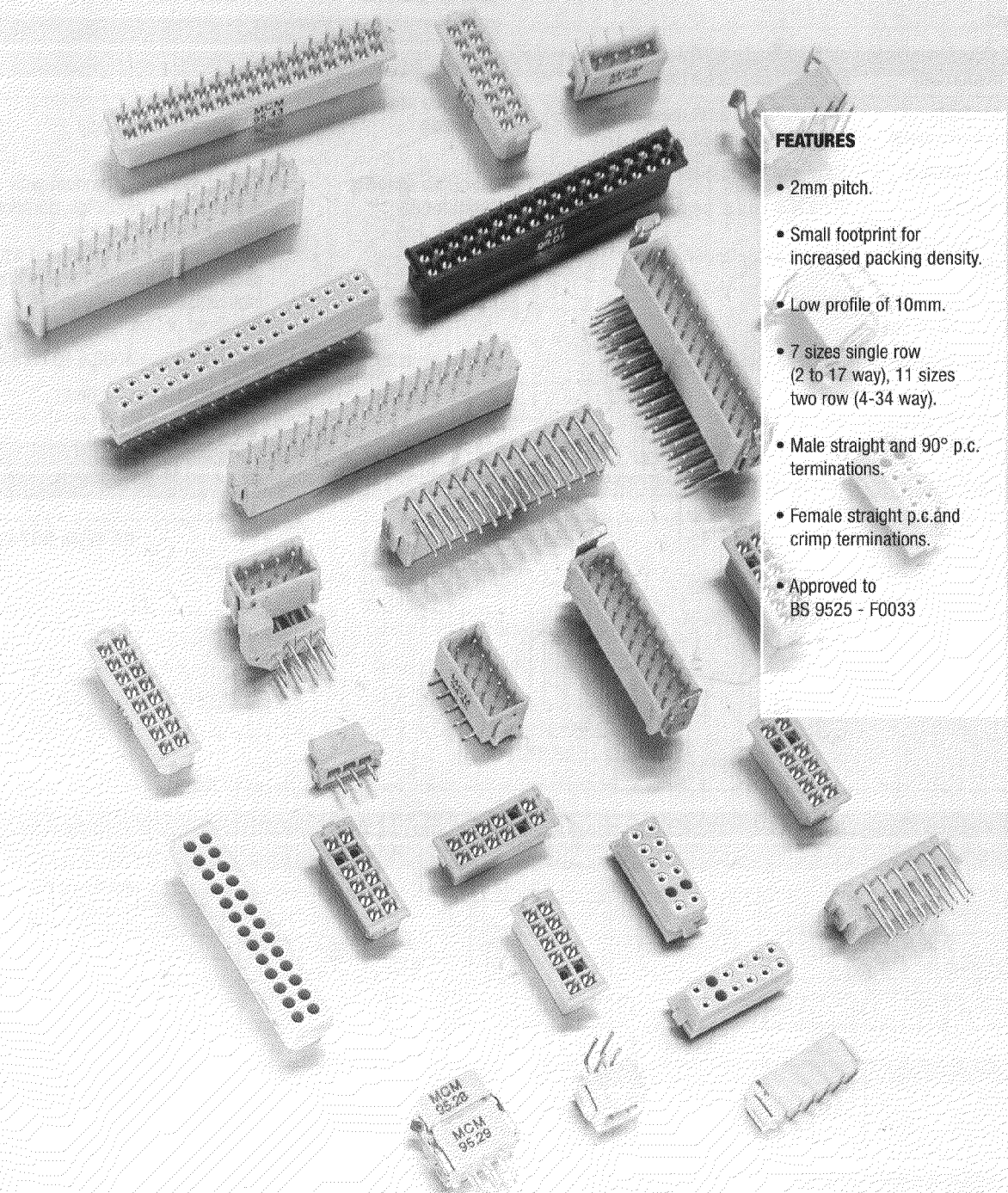
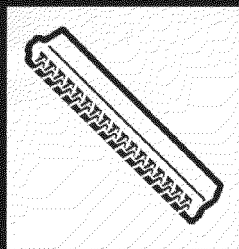


MICRONECTOR 200

High Density 2 mm Pitch Connectors



FEATURES

- 2mm pitch.
- Small footprint for increased packing density.
- Low profile of 10mm.
- 7 sizes single row (2 to 17 way), 11 sizes two row (4-34 way).
- Male straight and 90° p.c. terminations.
- Female straight p.c. and crimp terminations.
- Approved to BS 9525 - F0033



TECHNICAL DATA

Materials

Insulator	Glass filled thermoplastic rated UL94V-0
Contact	Copper alloy plated hard acid gold
Termination	Hard acid gold or tin/lead
Latch	Beryllium copper plated nickel

Electrical

Current	
Individual contacts (in insulation)	at 25°C Tamb. 3.3A max. at 85°C Tamb. 2.6A max.
All contacts (simultaneously)	at 25°C Tamb. 3.0A max. at 85°C Tamb. 2.2A max.
Working Voltage	120V d.c. or a.c. peak
Proof Voltage	360V d.c. or a.c. peak
Contact Resistance (initially)	10mΩ max.
Contact Resistance (after conditioning)	13mΩ max.
Insulation Resistance (initially)	1000MΩ min.
Insulation Resistance (after conditioning)	100MΩ min.

Mechanical

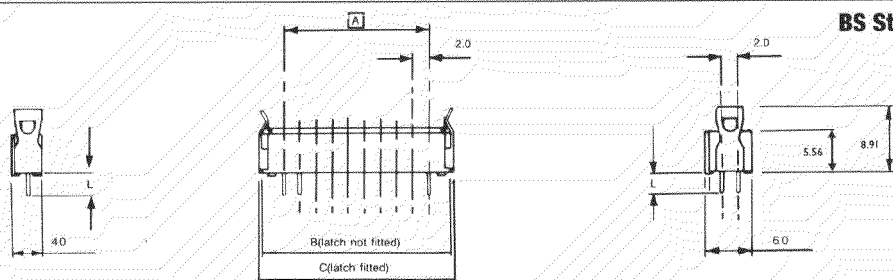
Mechanical operations	500
Insertion and withdrawal force (per contact pair)	0.8N max., 0.2N min.
Contact retention	10N min.
Crimp barrel accommodation	22 A.W.G. - 28 A.W.G. to BS G 210 Type A

Environmental

Climatic category	55/125/56
Vibration severity (General)	10Hz, 2000Hz 0.75mm/98m/s ² (10g _n) duration 6h
Vibration severity (Additional)	13.3Hz to 2000Hz random with superimposed sinusoids, duration 15 min each of 4 planes. No intermittancies measured when using an H.S.L.I. (High Speed Logic Interrupt) detector with a trip threshold of 2ns
Bump severity	390m/s ² (40g _n) 4000 ±10 bumps
Shock severity	981m/s ² (100g _n), for 6ms
Acceleration severity	490m/s ² (50g _n)

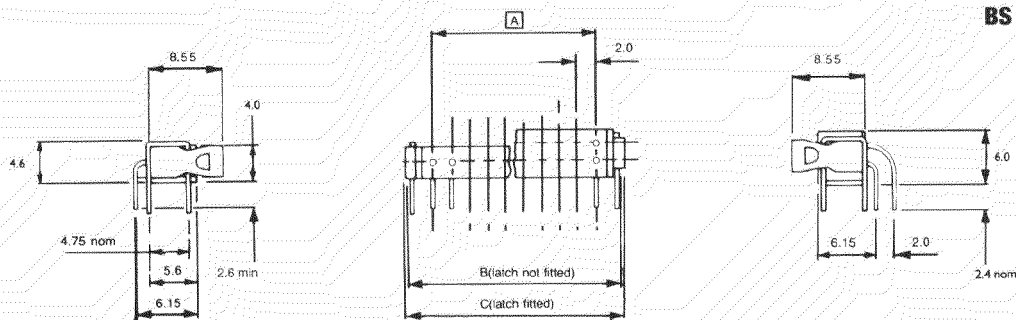
Male Straight p.c. Termination Type T, X & Y

	L(nom)
T	2.9
Y	5.35
X	9.35



BS Style B5743

Male 90° p.c. Termination Type L

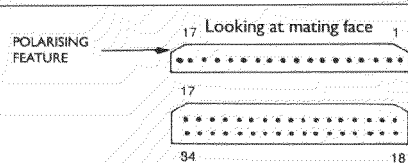


BS Style B5743

Outline Dimensions

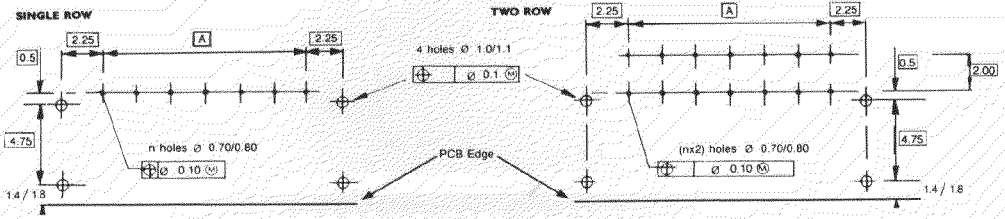
Contact Arrangement Single row	2	3	4	5	6	7	-	-	-	-	17
Contact Arrangement Two row	4	6	8	10	12	14	16	18	20	26	34
A	2.00	4.00	6.00	8.00	10.00	12.00	14.00	16.00	18.00	24.00	32.00
B	7.6	9.6	11.6	13.6	15.6	17.6	19.6	21.6	23.6	29.6	37.6
C	8.1	10.1	12.1	14.1	16.1	18.1	20.1	22.1	24.1	30.1	38.1

Pin Numbering



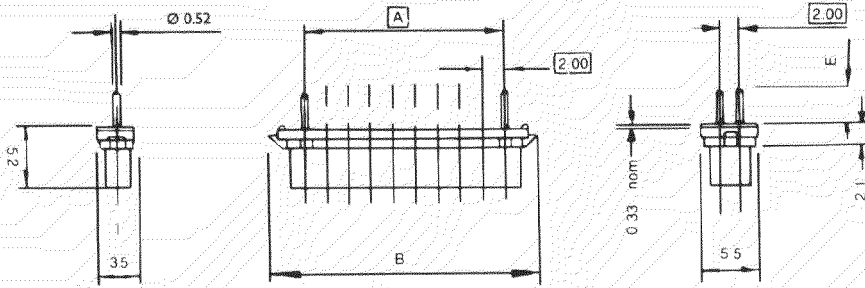
Male connector

Mounting Details for Male Connectors Termination Type L for Male and Female Connectors Termination Style T, X, Y & N - Omit 1.1/1.0mm Holes



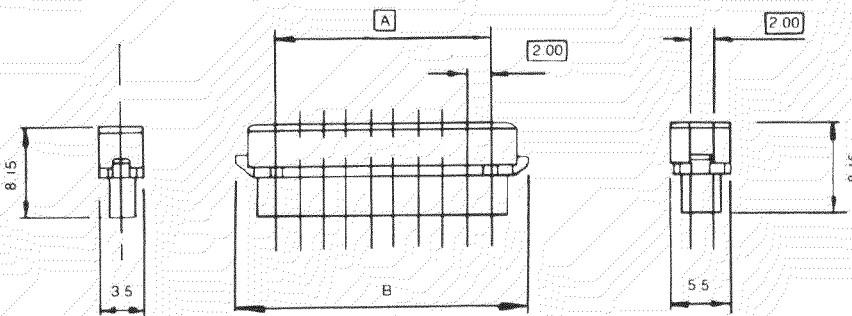
Female Straight p.c. Termination Type T & N

BS Style B5741



Female Crimp Termination Type C & D

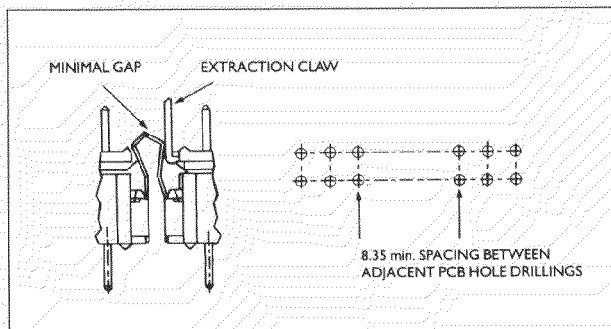
BS Style B5740



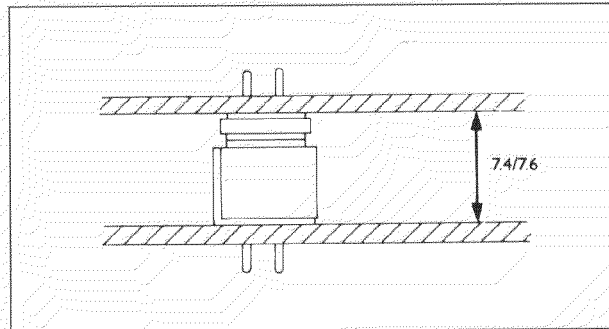
Outline Dimensions

Contact Arrangement Single Row	2	3	4	5	6	7	-	-	-	-	17
Contact Arrangement Two Row	4	6	8	10	12	14	16	18	20	26	34
A	2.00	4.00	6.00	8.00	10.00	12.00	14.00	16.00	18.00	24.00	32.00
B	7.3	9.3	11.3	13.3	15.3	17.3	19.3	21.3	23.3	29.3	37.3
Termination Type	T					N					
E (nom.)	2.9					1.1					

Minimum Spacing End to End Dimensions



Spacing Board - Board



Crimp Details

Preferred wire type BS G 210 (Type A)

* Also suitable for use with 24 A.W.G. DEF-STAN 61-12 (Part 6 Type 1) PVC

NOTE: Whilst a crimp contact withdrawal tool (MP6808) is available as an optional accessory, it is only suitable for removal of ALL contacts when the moulding MUST be replaced prior to reinsertion of the contacts.

Termination type	Crimp barrel accommodation	Wire Size/Crimp Tool Setting			
		22 A.W.G.	24 A.W.G.	26 A.W.G.	28 A.W.G.6
C*	24-28 A.W.G.	-	7	6	6
D	22 A.W.G.	6	-	-	-

ORDERING INFORMATION

SERIES	201	M	17	T	01	L	B5743	-1	17	-	M	-	T	-	3
BS STYLE															
CONTACT TYPE															
CONTACT ARRANGEMENT															
TERMINATION TYPE															
TERMINATION FINISH															
VARIANT	BS VARIANT														

Series McM	Series BS
201 - Single row	1
202 - Two row	2

BS Style
B5740 - Female crimp
B5741 - Female p.c.
B5743 - Male all

Contact Type	McM & BS
M - Male	
F - Female	

Contact Arrangement	McM & BS
Single row - 02, 03, 04, 05, 06, 07 and 17	
Two row - 04, 06, 08, 10, 12, 14, 16, 18, 20, 26 and 34	

Termination Type	McM & BS
L - 90° p.c. (male only)	
T - Straight p.c. (male & female)	
Y - Straight p.c. (male only)	
X - Straight p.c. (male only)	
N - Straight p.c. (short female only, for flexible circuits)	
C - Crimp 24-28 A.W.G. (female only)	
D - Crimp 22 A.W.G. (female only)	

Termination Finish	McM	BS Variant
01 - Gold		0 = 03 + U
03 - Tin alloy		1 = 03 + L
Variant	McM	2 = 01 + U
U - No latches		3 = 01 + L
L - Latches fitted (male only)		

Tools

	Order Code
Hand Crimp Tool	M22520/2-01
8 Indent Die Set	(BS Style 5310-3A-300)
Connector Separating Tool	MP 6816/XX
XX = 02, 04 ... 32	(BS Style T5745-XX)
(This relates to Dim [A] as tool length is common to both single and two row items)	

	Order Code
Retaining Strap	MP 6759
Contact Insertion Tool	MP 6811
	(BS Style T5748-19)
Contact Withdrawal Tool	MP 6808
Crimp Tool Positioner	MP 6818
	(BS Style T5747)



Rodney Road, Portsmouth, Hampshire, PO4 8SG, UK. Tel: +44 (0) 1705 735361 Fax: +44 (0) 1705 821777

As we constantly strive to improve McMurdo products, all specifications are subject to change without notice.

M200/03/97